

## **REGULATIONS OF BUFFER ZONE**

- **RB1** Cords on river banks of Mékong-Namkhan
- **RB2** Cords on river banks of Nam Pa, Nam Dong, Nam Chan and Houay Hop
- **RB3** Cords on river banks of Houay Moud
- **NA1** Rice Fields
- **NC** Zone of mountains and forests

# RB1 - Cords on river banks of Mékong-Namkhan

## LOCATION OF ZONE:

This area covers the river banks of the Mekong and Nam Khan.

It extends along the Mekong River from Chomngoua to Phabatai villages and from PhoneSa-at village to the Souphanouvong University and along the Nam Khan river from Meunna to Nounsavath villages

## CHARACTER OF ZONE:

The both sided banks of the Mekong and Namkhan rivers are naturally steep, many rivers flow into it.

## FEATURE OF ZONE:

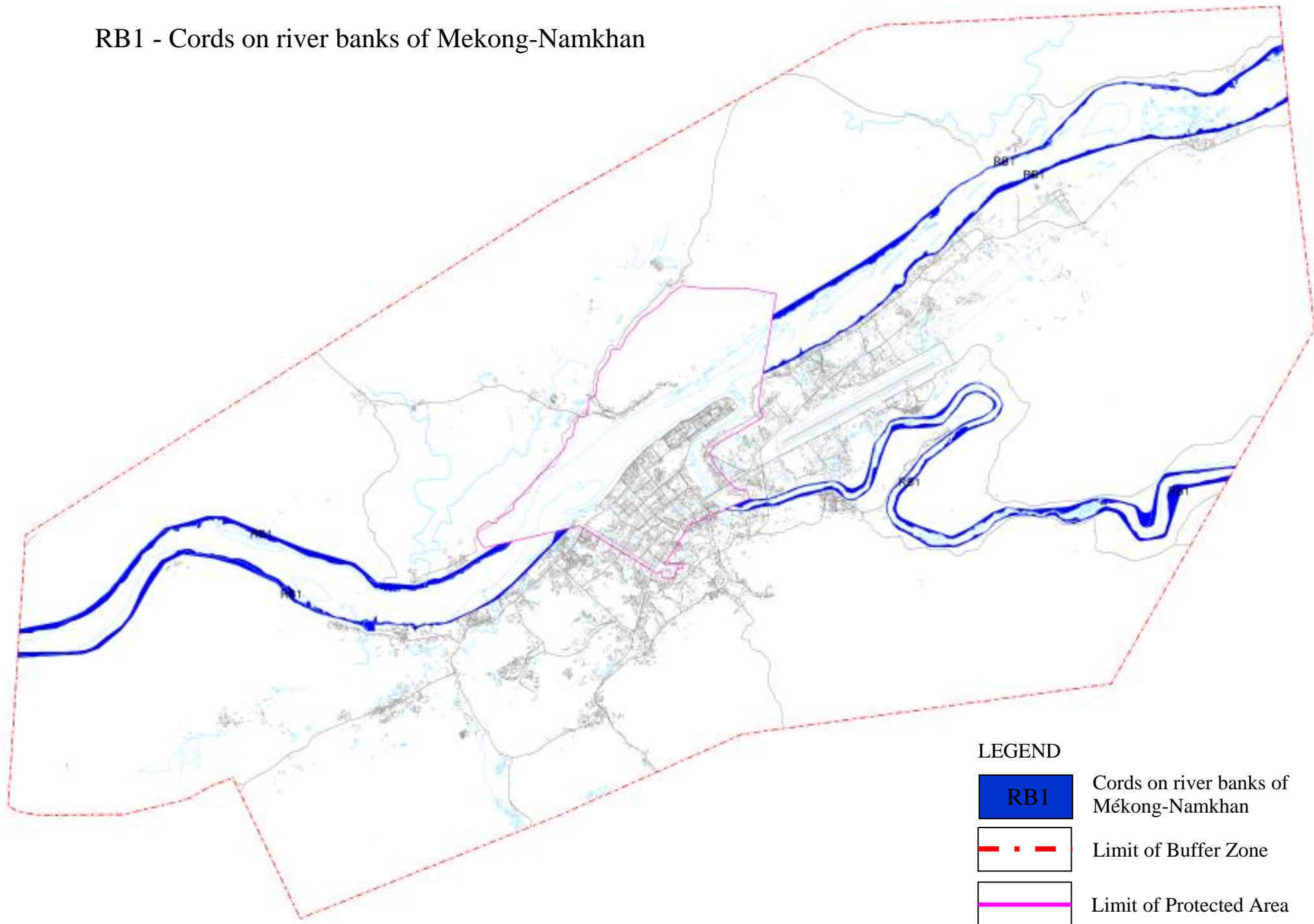
The remarkable feature is the abundance of various trees and vegetable gardens cultivated by local residents.

Note: the strip of land on shore cords of Mekong-Namkhan rivers is 15 m from the annual level of high water. **This zone is inconstructable** except for existing buildings.

<b>Section 1</b>	<b>Characteristics of the activities of the area</b>
<b>Article 1.</b> Activities allowed	<ul style="list-style-type: none"><li>- Forestry and agricultural activities</li><li>- Public projects (harbor construction, stairs, sanitation)</li><li>- Public Gardens</li></ul>
<b>Article 2.</b> Activities prohibited	<ul style="list-style-type: none"><li>- Felling trees, slash and burn</li><li>- The area is inconstructable</li><li>- Noisy and polluting activities</li><li>- Breeding non-domestic pollutant</li><li>- Fish farming</li><li>- Services, Parking: restaurants or guest houses on boats</li><li>Careers</li></ul>

(All other articles are not applicable)

# RB1 - Cords on river banks of Mekong-Namkhan



## **RB2 - Cords on river banks of Nam Pa, Nam Dong, Nam Chan and Houay Hop**

### **LOCATION OF ZONE:**

This zone covers both sides of the following rivers: Nam Pa, Nam Dong, Nam Chan and Houay Hop.

### **CHARACTER OF ZONE:**

The banks of these rivers are naturally steep.

### **FEATURE OF ZONE:**

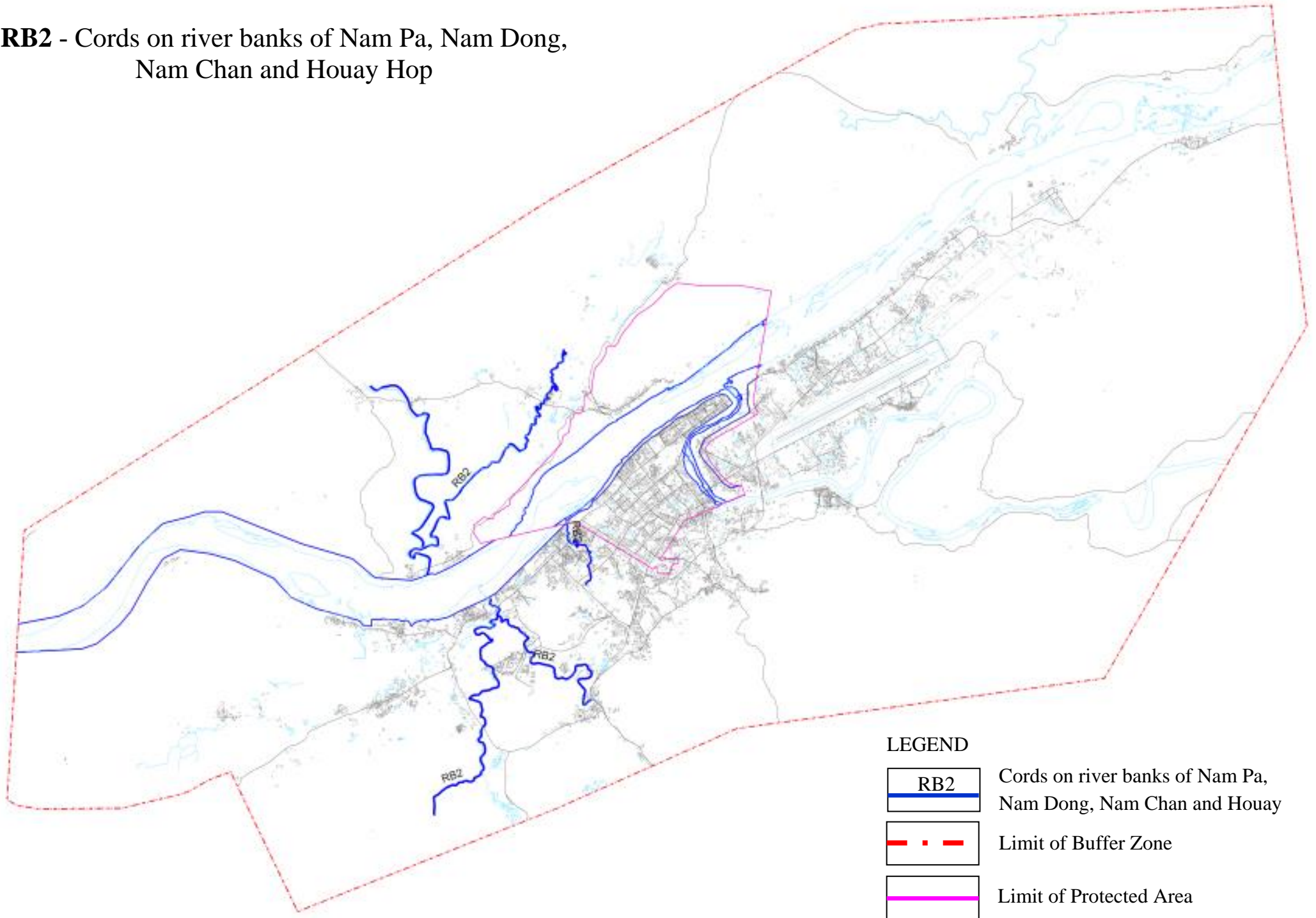
This zone is characterized by the abundance of trees of various species and the use of river banks for agriculture.

Note: the strip of land on the river banks leads is 6 m from the annual level of high water. **This zone is unbuildable** except for existing buildings.

<b>Section 1</b>	<b>Characteristics of the activities of the zone</b>
<b>Article 1.</b> Activities allowed	<ul style="list-style-type: none"> <li>- Forestry and agricultural activities</li> <li>- Gardening, tree planting</li> </ul>
<b>Article 2.</b> Activities prohibited	<ul style="list-style-type: none"> <li>- Felling trees, slash and burn</li> <li>- Careers</li> <li>- The area is unbuildable</li> <li>- Noisy and polluting activities</li> <li>- Breeding non-domestic pollutant</li> <li>- Fish farming</li> <li>- Services, Parking: restaurants and guest houses on boats</li> </ul>

(All other articles are not applicable)

**RB2** - Cords on river banks of Nam Pa, Nam Dong,  
Nam Chan and Houay Hop



## RB3 - Cords on river banks of Houay Moud

### LOCATION OF ZONE:

This zone covers both banks of the river Houay Moud.

### CHARACTER OF ZONE:

This stream has steep banks.

### FEATURE OF ZONE:

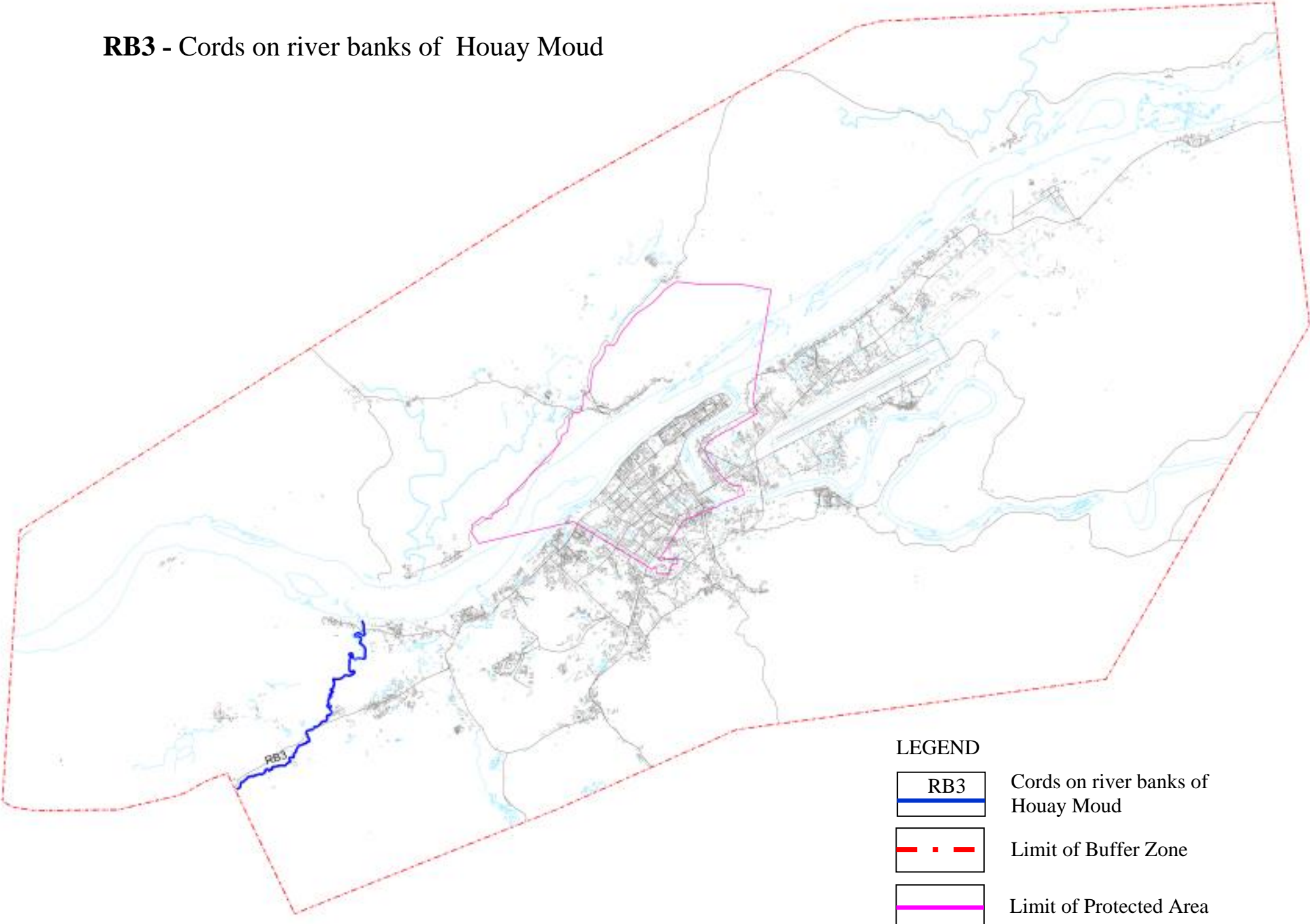
The remarkable feature of this zone is the abundance of trees of various species and the use of banks for agriculture.



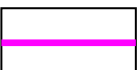
Note: the strip of land on the cords river bank Houay Moud is 3- 6m from the annual level of high water. **This zone is unbuildable** except for existing buildings.

Section 1	Characteristics of the activities of the zone
<b>Article 1.</b> Activities allowed	<ul style="list-style-type: none"><li>- Forestry and agricultural activities</li><li>- Gardening, tree planting</li></ul>
<b>Article 2.</b> Activities prohibited	<ul style="list-style-type: none"><li>- Felling trees, slash and burn</li><li>- Careers</li><li>- The area is unbuildable</li><li>- Noisy and polluting activities</li><li>- Breeding non-domestic pollutant</li><li>- Fish farming</li><li>- Services, Parking: restaurants and guest houses on boat</li></ul>

(All other articles are not applicable)

**RB3 - Cords on river banks of Houay Moud**



LEGEND	
	Cords on river banks of Houay Moud
	Limit of Buffer Zone
	Limit of Protected Area

# NA1 - Rice Fields

## **LOCATION OF ZONE:**

This zone is located south of the Luang Prabang town and includes rice fields of the following villages: Naxang, Nadeuay, Pongwan, Sangkhalok, Phoumok and rice fields in Chompheth District: Nakham, Natha , Channeua and Chantal. Total surface is 280 ha

## **CHARACTER OF ZONE:**

It is a natural agricultural zone. It occupies the plains without relief, for the growing of rice and vegetables.

## **FEATURE OF ZONE**

It acts as a green lung and offers wonderful views from the city.

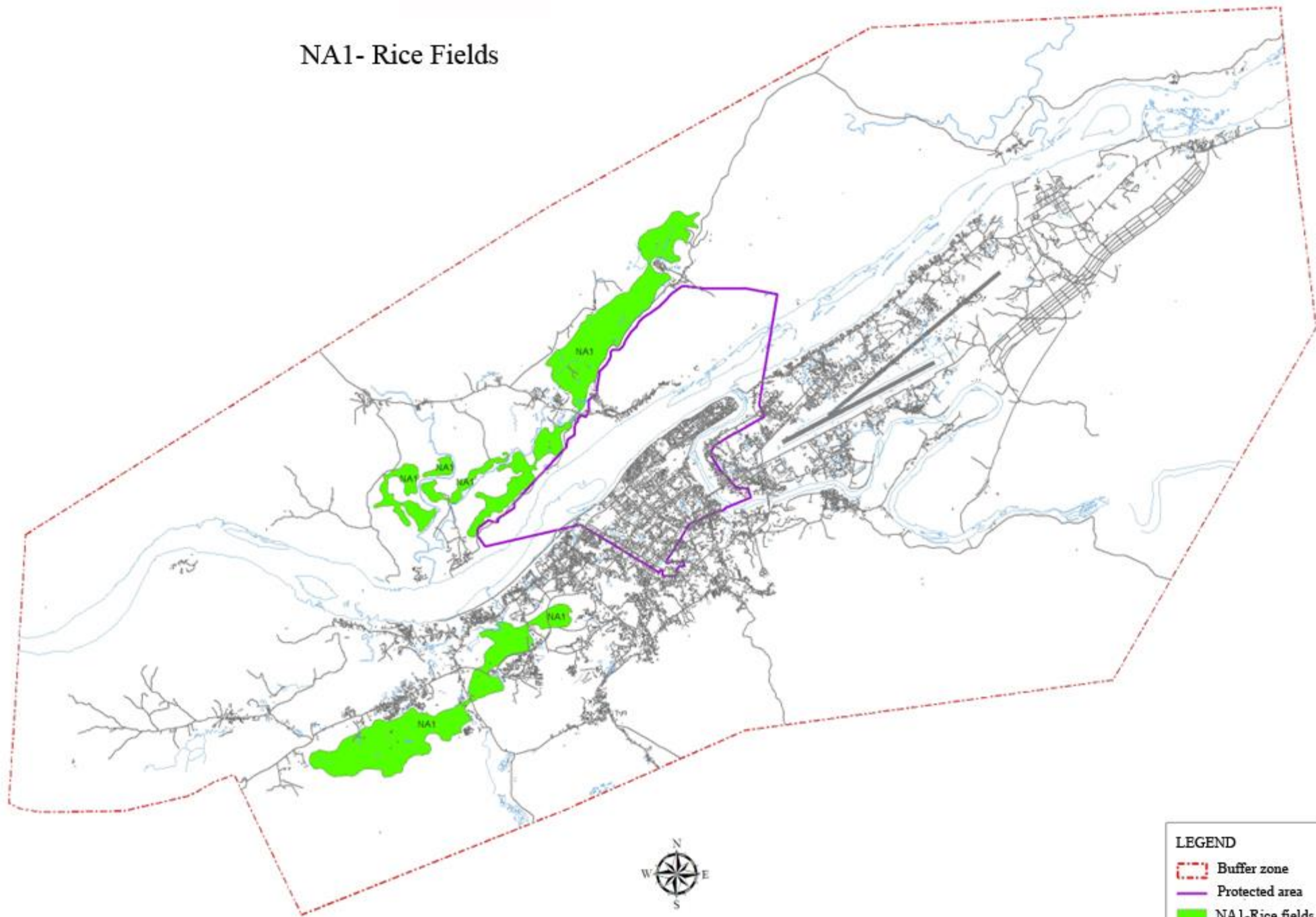
**This zone does not apply COS.**

<b>Section 1</b>	<b>Characteristics of the activities of the zone</b>
<b>Article 1.</b> Activities allowed	<ul style="list-style-type: none"><li>- Agriculture and gardening</li><li>- Temporary structures made of natural material (wood, bamboo) with an area less than 12 m<sup>2</sup></li></ul>
<b>Article 2.</b> Activities prohibited	<ul style="list-style-type: none"><li>- The area is unbuildable</li><li>- Industrial breeding or other polluting activities</li></ul>

(All other articles are not applicable)



# NA1- Rice Fields



**LEGEND**

-  Buffer zone
-  Protected area
-  NA1-Rice fields



## NC – Zone of mountains and forests

### LOCATION OF ZONE:

This zone covers the mountains surrounding the protected area and includes the following mountains: Phou Lek, Phou Xang, Phou Xouang, Phou Kyuthouane, Phou Chomhuat, Phou Khai, PhaTangnai and Pha Datke.

### CHARACTER OF ZONE:

This zone includes the mountain ranges that surround Luang Prabang town. They are covered with natural forests.

### FEATURE OF ZONE:

These mountains of varying heights are the object of many legends related to the history of the town. This zone is one of the important elements of the landscape of Luang Prabang.

This zone does not apply COS



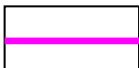
<b>Section 1</b>	<b>Characteristics of the activities of the zone</b>
<b>Article 1.</b> Activities allowed	<ul style="list-style-type: none"><li>- Forestry and agricultural activities</li><li>- Construction of temporary gazebos (wood, bamboo) for the discovery of sightseeing (for tourists)</li></ul>
<b>Article 2.</b> Activities prohibited	<ul style="list-style-type: none"><li>- Felling trees, slash and burn</li><li>- The area is unbuildable (however, the foot of the mountains to the altimetric 340m, exceptions may be granted if necessary)</li><li>- Careers</li></ul>

(All other articles are not applicable)

# NC – Zone of mountains and forests



## LEGEND

-  Zone of mountains and forests
-  Limit of Buffer Zone
-  Limit of Protected Area